

About This Manual

Subject

This manual provides reference material for all aspects of Adaptive Server Anywhere, including SQL statements, administration utilities, error messages, system tables, and so on.

Other manuals provide more motivation and context for how to carry out particular tasks, this manual is the place to look for complete listings of available syntax, utility command-line options, and so on.

Audience

This manual is for all users of Adaptive Server Anywhere. It is to be used in conjunction with other manuals in the documentation set.

Contents

Topic	Page
Adaptive Server Anywhere documentation	xii
Documentation conventions	xiii
The sample database	xvii

Adaptive Server Anywhere documentation

The Adaptive Server Anywhere documentation consists of the following books:

- ◆ **New Features and Upgrading Guide** Intended for all users of Adaptive Server Anywhere, this book describes the following:
 - ◆ New features in Adaptive Server Anywhere 6.0
 - ◆ Behavior changes from previous releases
 - ◆ Upgrade procedures..
- ◆ **User's Guide** Intended for all users of Adaptive Server Anywhere, including database administrators and application developers, this book describes in depth all aspects of how to use Adaptive Server Anywhere.
- ◆ **Programming Interfaces Guide** Intended for application developers writing programs that directly access the ODBC, Embedded SQL, or Open Client interfaces, this book describes how to develop applications for Adaptive Server Anywhere.

This book is not required for users of Application Development tools with built-in ODBC support, such as Powersoft PowerBuilder or Power++.

- ◆ **Reference Manual** A full reference to Adaptive Server Anywhere. This book describes the database server, the administration utilities, the SQL language, and error messages.
- ◆ **Data Replication with SQL Remote** A complete description of the SQL Remote replication system.
- ◆ **UltraLite Developer's Guide** Intended for application developers writing programs using the UltraLite deployment option of Adaptive Server Anywhere. UltraLite allows you to deploy database applications to small or mobile embedded devices, such as PDAs and cellular phones.
- ◆ **Quick Reference Guide** A handy printed booklet with complete SQL syntax and other key reference material in a concise format.

The format of these books (printed or online) may depend on the product in which you obtained Adaptive Server Anywhere.

Depending on which package you have purchased, you may have additional books describing other components of your product.

Documentation conventions

This section lists the typographic and graphical conventions used in this documentation.

Syntax conventions

The following conventions are used in the SQL syntax descriptions:

- ◆ **Keywords** All SQL keywords are shown in UPPER CASE. However, SQL keywords are case insensitive, so you can enter keywords in any case you wish; SELECT is the same as Select which is the same as select.
- ◆ **Placeholders** Items that must be replaced with appropriate identifiers or expressions are shown in *italics*.
- ◆ **Continuation** Lines beginning with ... are a continuation of the statements from the previous line.
- ◆ **Repeating items** Lists of repeating items are shown with an element of the list followed by an ellipsis (three dots). One or more list elements are allowed. If more than one is specified, they must be separated by commas.
- ◆ **Optional portions** Optional portions of a statement are enclosed by square brackets. For example, ...

```
RELEASE SAVEPOINT [ savepoint-name ]
```

... indicates that the *savepoint-name* is optional. The square brackets should not be typed.

- ◆ **Options** When none or only one of a list of items must be chosen, the items are separated by vertical bars and the list enclosed in square brackets.

For example, ...

```
[ ASC | DESC ]
```

... indicates that you can choose one of ASC, DESC, or neither. The square brackets should not be typed.

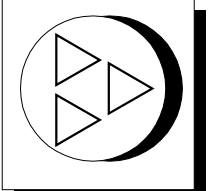
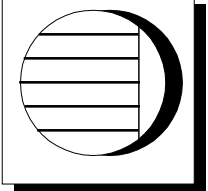
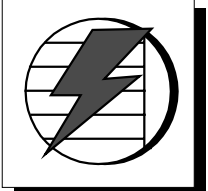
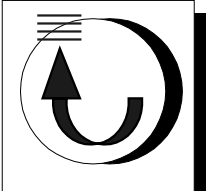
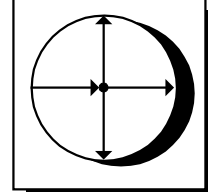
- ◆ **Alternatives** When precisely one of the options must be chosen, the alternatives are enclosed in curly braces. For example ...

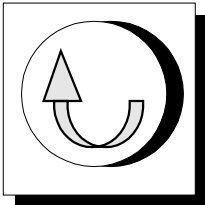
```
QUOTES { ON | OFF }
```

... indicates that exactly one of ON or OFF must be provided. The braces should not be typed.

Graphic icons

The following icons are used in this documentation:

Icon	Meaning
	A client application.
	A database server, such as Sybase Adaptive Server Anywhere or Adaptive Server Enterprise.
	An Adaptive Server Anywhere database server.
	A SQL Remote Message Agent
	A Sybase Replication Server.

Icon	Meaning
	A Replication Agent. A replication agent is required for a database to act as a primary data site in Sybase Replication Server installations.

Installed files

The following terms are used throughout the manual:

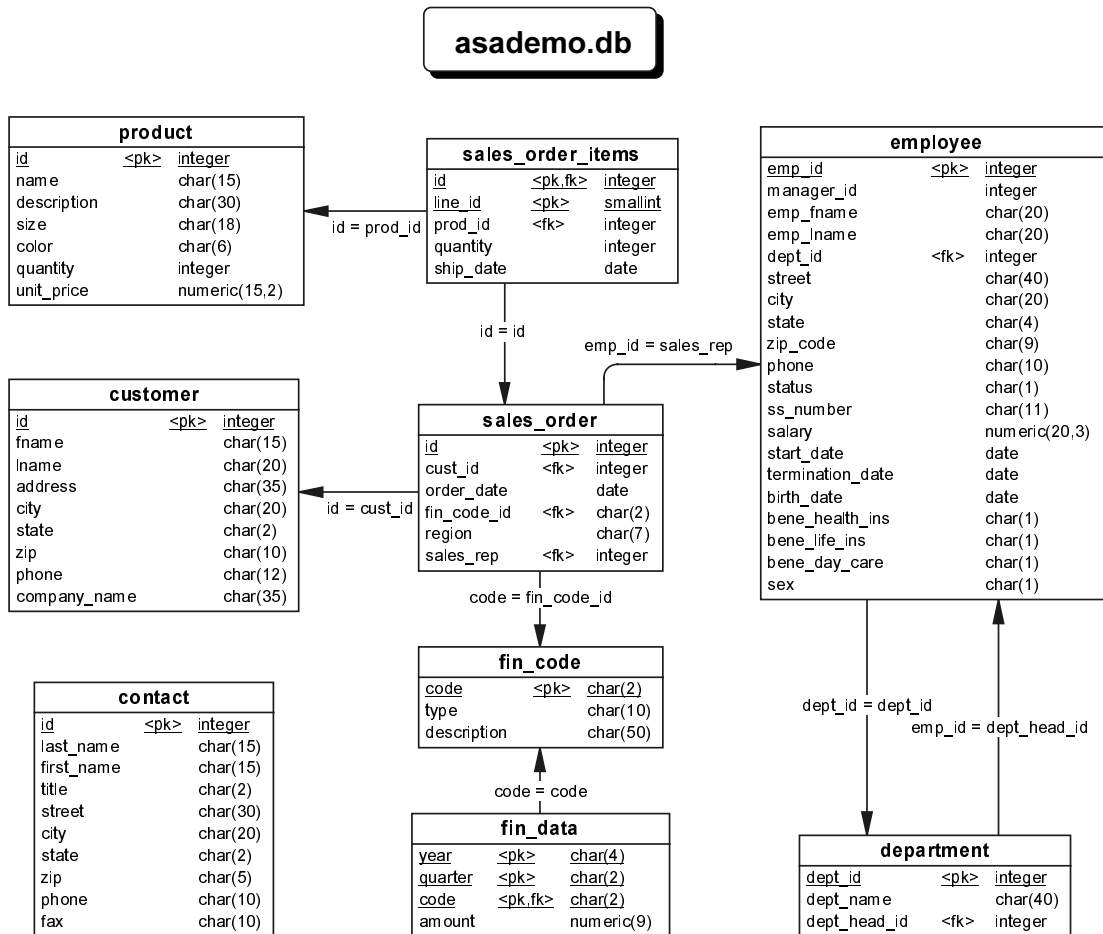
- ◆ **Installation directory** The directory into which you install Adaptive Server Anywhere.
- ◆ **Executable directory** The executables and other files for each operating system are held in an executable subdirectory of the installation directory. This subdirectory has the following name:
 - ◆ **Windows NT and Windows 95** win32
 - ◆ **UNIX** bin
 - ◆ **Windows 3.x** win
 - ◆ **Novell NetWare** nlm

The sample database

There is a sample database included with Adaptive Server Anywhere. Many of the examples throughout the documentation use this sample database.

The sample database represents a small company. It contains internal information about the company (employees, departments, and financial data) as well as product information (products), sales information (sales orders, customers, and contacts), and financial information (fin_code, fin_data).

The following figure shows the tables in the sample database and how they are related to each other.



The sample database is held in a file named *asademo.db*, and is located in your installation directory.

