

About this Manual

Subject This manual describes SQL Remote Version 6, the message-based two-way replication system designed for mobile computing.

Audience This manual is for users of Adaptive Server Anywhere and Adaptive Server Enterprise who wish to add SQL Remote replication to their information systems.

Contents	Topic	Page
	Documentation conventions	x
	The sample database	xiv

Documentation conventions

This section lists the typographic and graphical conventions used in this documentation.

Syntax conventions

The following conventions are used in the SQL syntax descriptions:

- ◆ **Keywords** All SQL keywords are shown in UPPER CASE. However, SQL keywords are case insensitive, so you can enter keywords in any case you wish; SELECT is the same as Select which is the same as select.
- ◆ **Placeholders** Items that must be replaced with appropriate identifiers or expressions are shown in *italics*.
- ◆ **Continuation** Lines beginning with ... are a continuation of the statements from the previous line.
- ◆ **Repeating items** Lists of repeating items are shown with an element of the list followed by an ellipsis (three dots). One or more list elements are allowed. If more than one is specified, they must be separated by commas.
- ◆ **Optional portions** Optional portions of a statement are enclosed by square brackets. For example, ...

```
RELEASE SAVEPOINT [ savepoint-name ]
```

... indicates that the *savepoint-name* is optional. The square brackets should not be typed.

- ◆ **Options** When none or only one of a list of items must be chosen, the items are separated by vertical bars and the list enclosed in square brackets.

For example, ...

```
[ ASC | DESC ]
```

... indicates that you can choose one of ASC, DESC, or neither. The square brackets should not be typed.

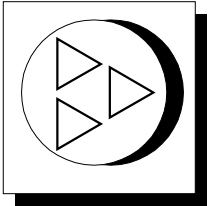
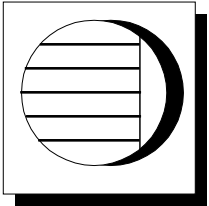
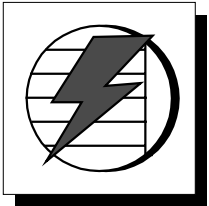
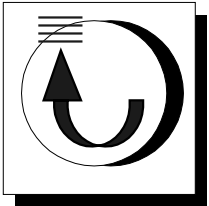
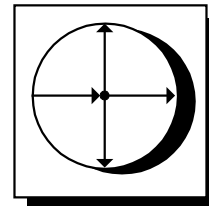
- ◆ **Alternatives** When precisely one of the options must be chosen, the alternatives are enclosed in curly braces. For example ...

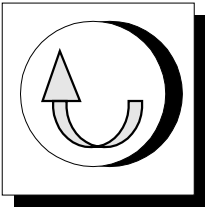
```
QUOTES { ON | OFF }
```

... indicates that exactly one of ON or OFF must be provided. The braces should not be typed.

Graphic icons

The following icons are used in this documentation:

Icon	Meaning
	A client application.
	A database server, such as Sybase Adaptive Server Anywhere or Adaptive Server Enterprise.
	An Adaptive Server Anywhere database server.
	A SQL Remote Message Agent
	A Sybase Replication Server.

Icon	Meaning
	A Replication Agent. A replication agent is required for a database to act as a primary data site in Sybase Replication Server installations.

Installed files

The following terms are used throughout the manual:

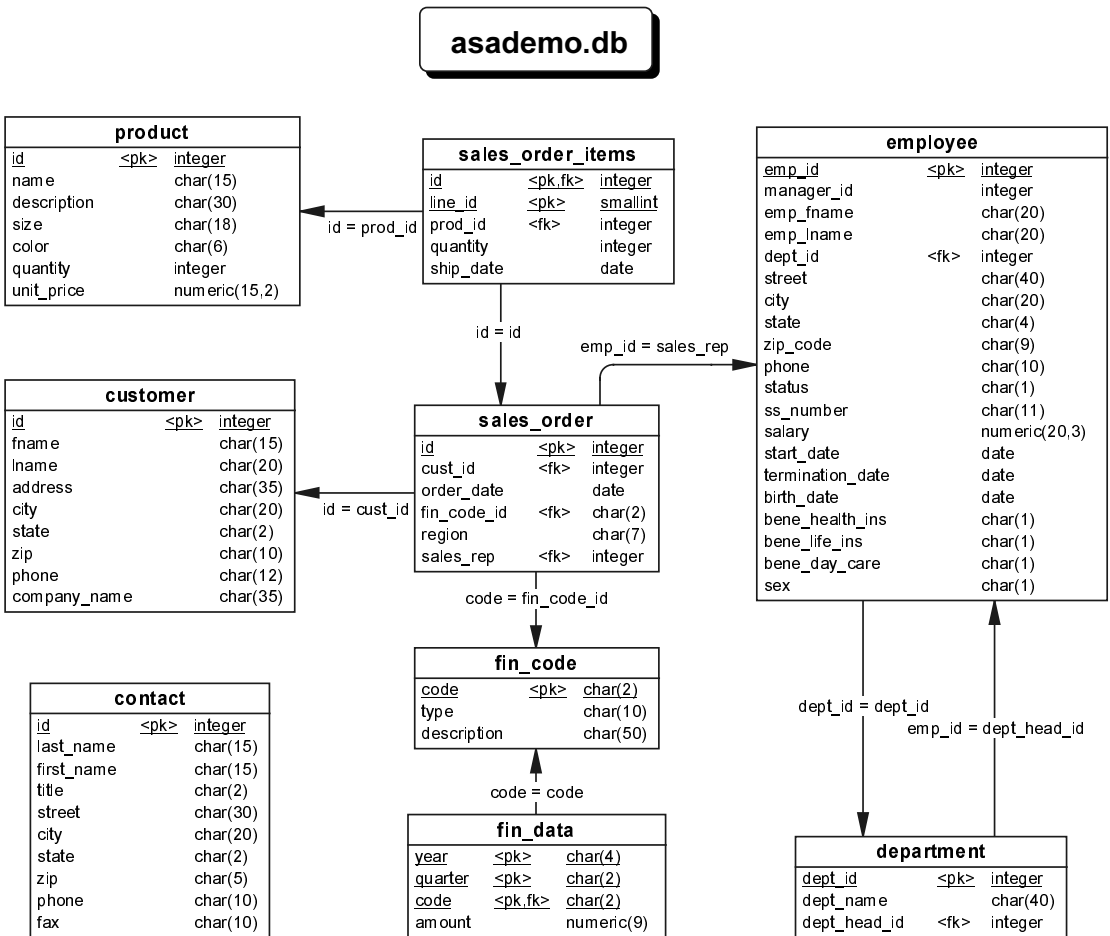
- ◆ **Installation directory** The directory into which you install Adaptive Server Anywhere.
- ◆ **Executable directory** The executables and other files for each operating system are held in an executable subdirectory of the installation directory. This subdirectory has the following name:
 - ◆ **Windows NT and Windows 95** win32
 - ◆ **UNIX** bin
 - ◆ **Windows 3.x** win
 - ◆ **Novell NetWare** nlm

The sample database

There is a sample database included with Adaptive Server Anywhere. Many of the examples throughout the documentation use this sample database.

The sample database represents a small company. It contains internal information about the company (employees, departments, and financial data) as well as product information (products), sales information (sales orders, customers, and contacts), and financial information (fin_code, fin_data).

The following figure shows the tables in the sample database and how they are related to each other.



The sample database is held in a file named *asademo.db*, and is located in your Adaptive Server Anywhere installation directory.